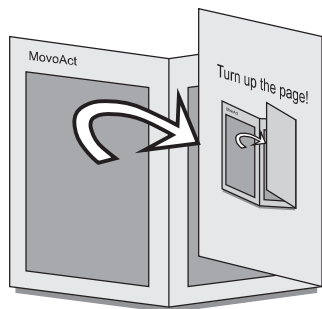


Turn up the page!



**Technical data**

	DMD	DMA
Motor	DC-motor with auto reset thermal switch do not use thermal switch as overload protection	AC-motor with auto reset thermal switch do not use thermal switch as overload protection
Supply voltage (for exact voltage, see label on MovAct).	12, 24 or 36 Vdc $\pm$ 15 % The motor accepts battery and smoothed or unsmoothed full wave rectified voltage.	1~115 VAC (102 – 130 V) 60 Hz 1~230 VAC (212 – 240 V) 50/60 Hz 3~400 VAC (360 – 420 V) 50/60 Hz
Capacitor	–	115 VAC = 35 $\mu$ F (p/no. D900-448-002) 230 VAC = 10 $\mu$ F (p/no. D900-449-003) 400 VAC = not necessary
Max. current	See label on MovAct	See label on MovAct
Max. dynamic load	See label on MovAct	See label on MovAct
Duty cycle	25 % @ full load 25° C	25 % @ full load 25° C
Max. on time	One full cycle at full load	45 s
Ambient temperature	- 25 – + 65 °C	- 25 – + 65 °C
Lubrication	for life	for life
Slip clutch	yes (set to 1.2 – 1.5 x max. dyn. load)	yes (set to 1.2 – 1.5 x max. dyn. load)
Anti backdriving mechanism	yes	yes or electromagnetically released brake

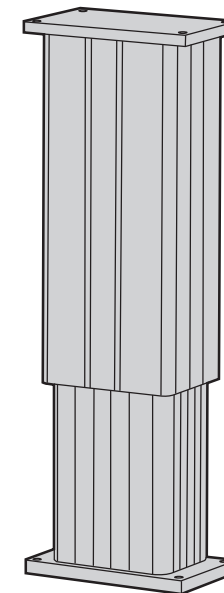
**Always install fuse and / or thermal breaker between  
motor and power supply to protect actuator, wiring and other items.**

**TOLLO LINEAR AB**

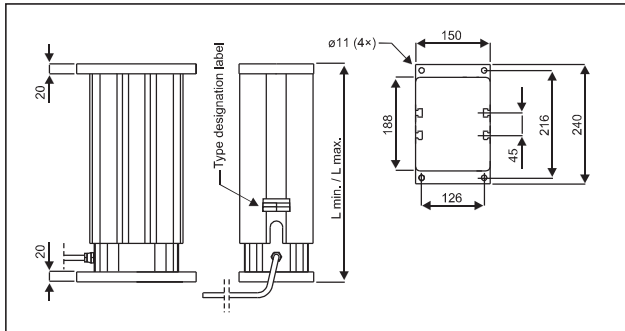
Box 9053, SE-291 09 Kristianstad, Sweden  
Tel. +46 (0)44-246700 Fax. +46 (0)44-244085

PRINTED IN SWEDEN © 2000 DW110431gb-0350  
Printed on recycled paper

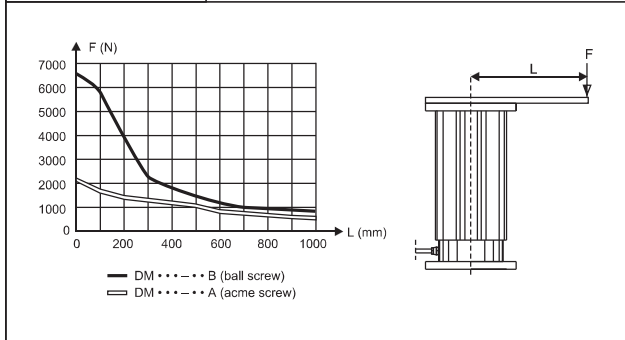
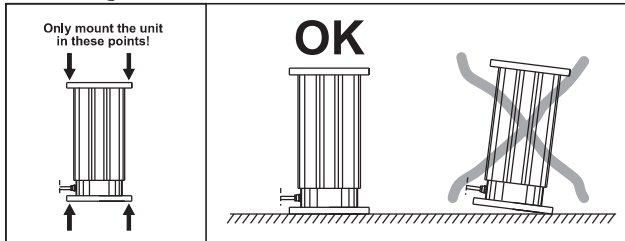
**Installation manual for MovAct**



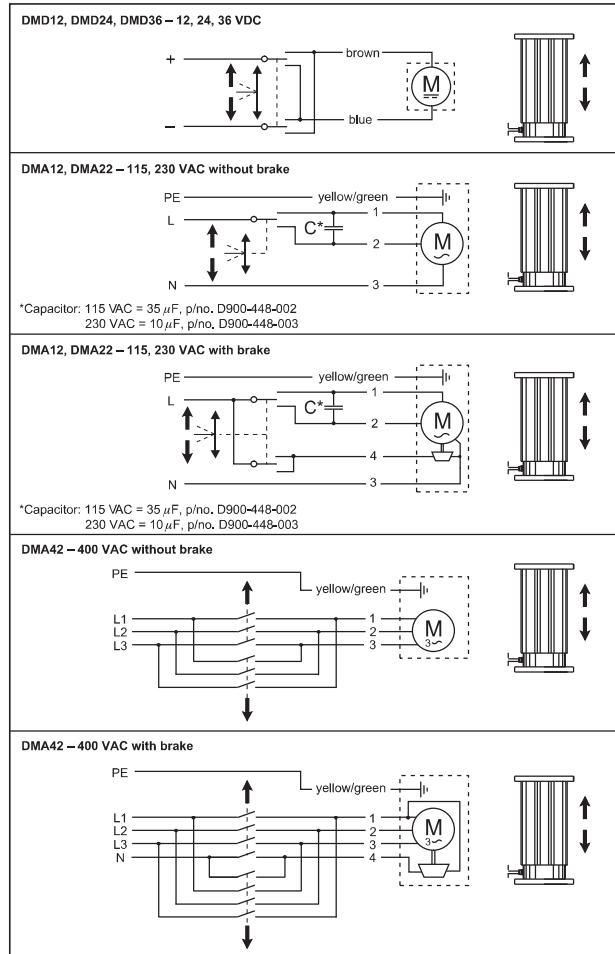
## Main dimensions



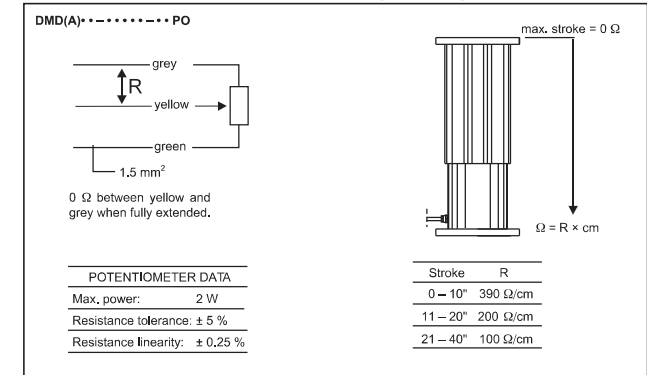
## Mounting instructions



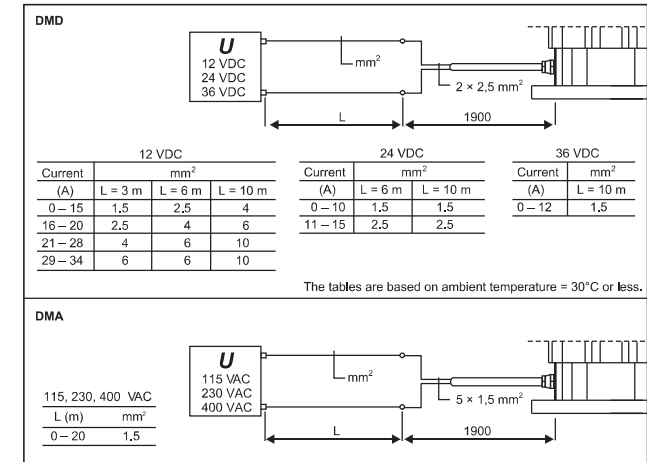
## Electrical connections



## Connection of potentiometer (option)



## Wire cross section



**CAUTION!**  
Always turn the power off before working on the actuator or the wiring.